

Appendix D

X Ray Data

These X Ray spectra are copied directly from the original colour plots.

Sample No.	Fig. No.	Plot caption	Page
B17 (B69)	D.1	B69-B17x	D-1
J13/2	D.2	(none)	D-2
J17/2	D.3	J17/2x	D-3
J58/5	D.4	J58/5x	D-4
J58/7	D.5	J58/7x	D-5
J58/8	D.6	J58/8x	D-6
J58/11	D.7	J58/11x	D-7
J58/12	D.8	J58/12x	D-8
J58/23	D.9	J58/23x	D-9
J58/30	D.10	J58/30x	D-10
J105/7	D.11	J105/7x	D-11
J105/8	D.12	(none)	D-12
J105/10	D.13	J105/10x	D-13
$\Sigma/4$	D.14	sigma4x	D-14
$\Sigma/9$	D.15	(none)	D-15
$\Sigma/10$	D.16	(none)	D-16
$\Sigma/11c$	D.17	sigma11cx	D-17
$\Sigma/W111xtal$	D.18	W111 crystal	D-18
$\Sigma/W111soft$	D.19	Sigma W111 soft powder	D-19
$\Sigma/W114$	D.20	W114 slide	D-20
W52/5	D.21	W52/5x	D-21
W52/6	D.22	W52/6x	D-22
W144/5	D.23	W144-5x	D-23
W144/7	D.24	(none)	D-24
W144/9	D.25	W144/9x	D-25

Table D.1: X Ray Spectra.

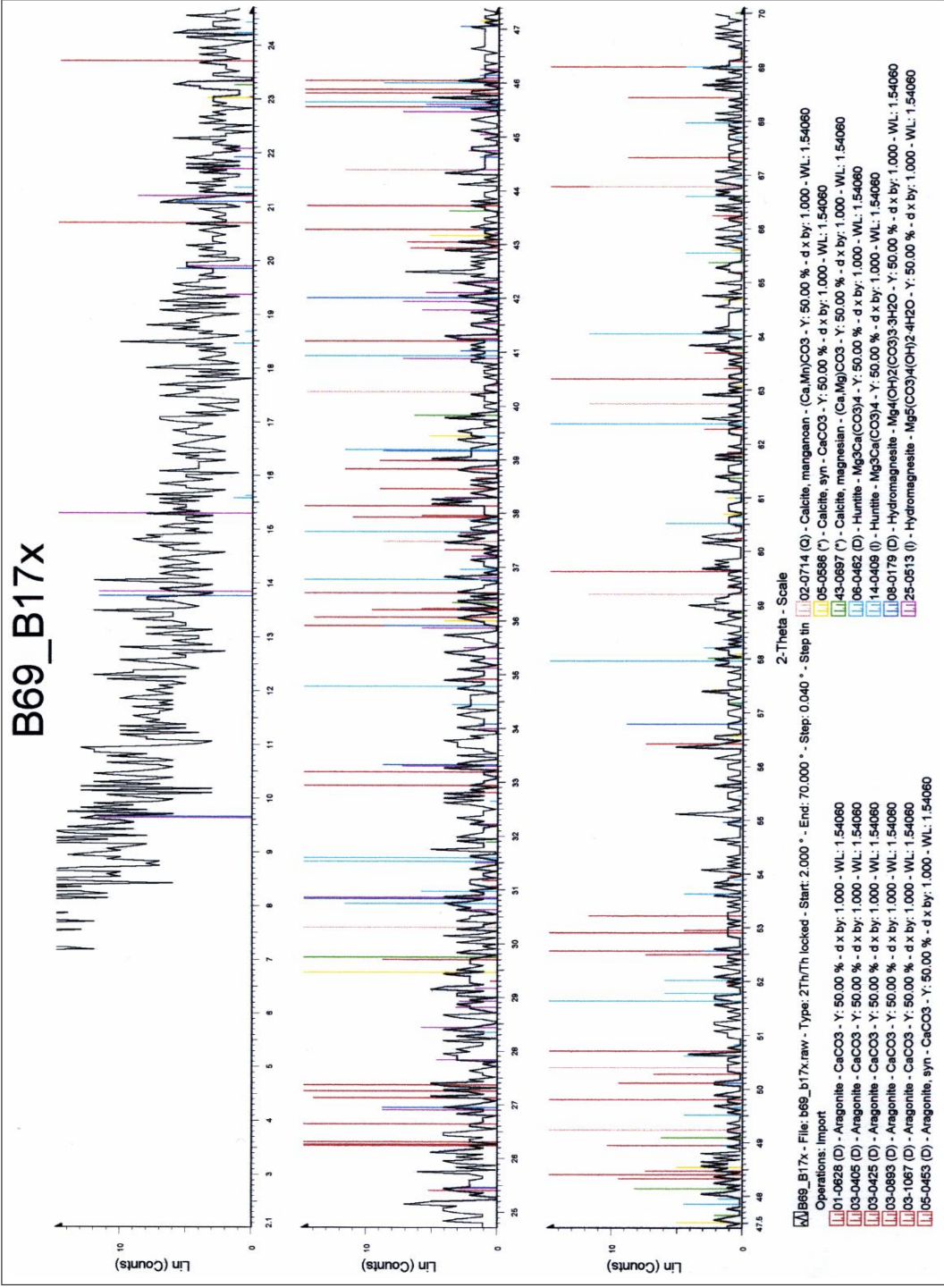


Figure D.1: XRD spectra - B17-B69

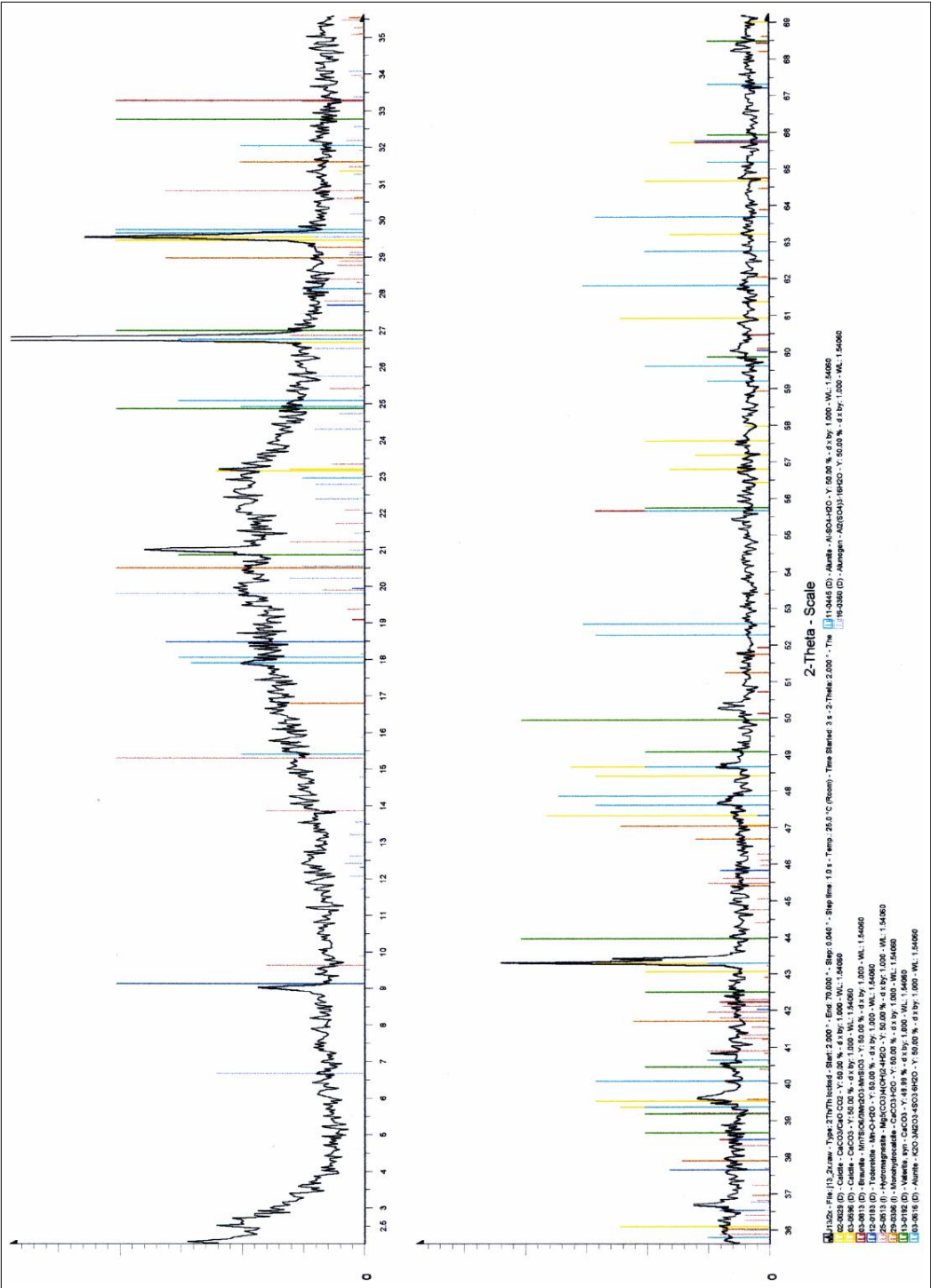


Figure D.2: XRD spectra - J13-2



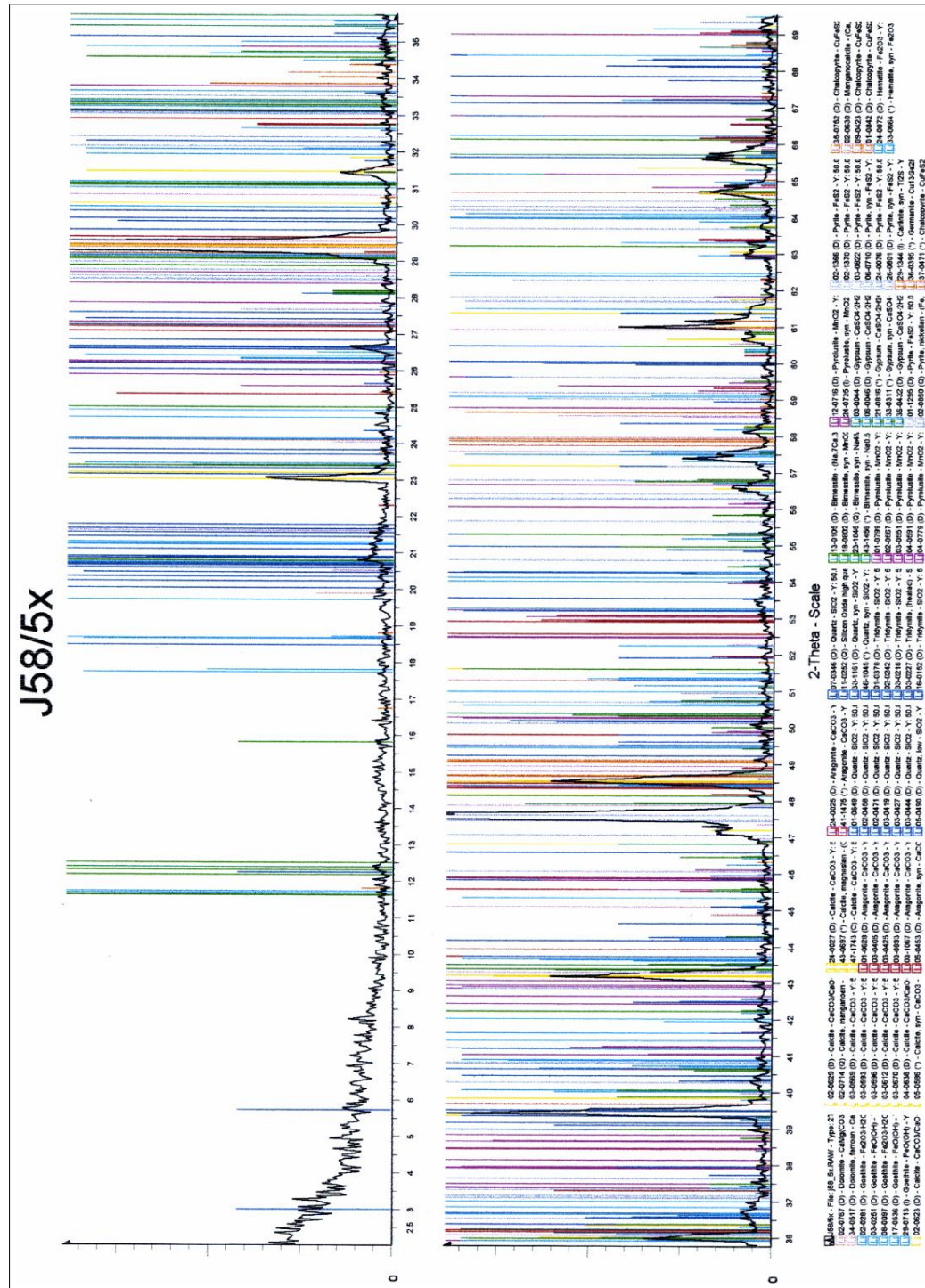


Figure D.4: XRD spectra - J58-5

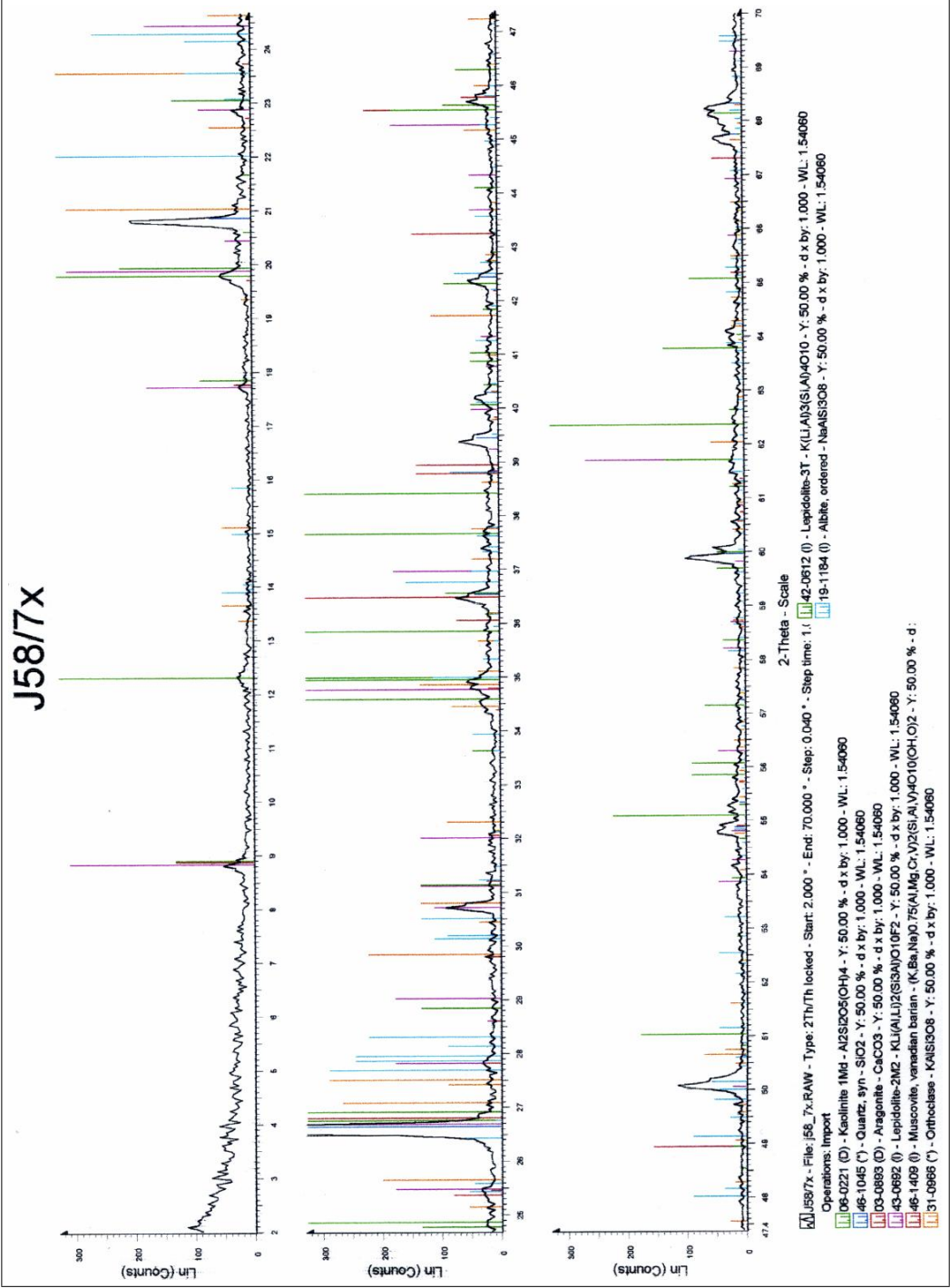
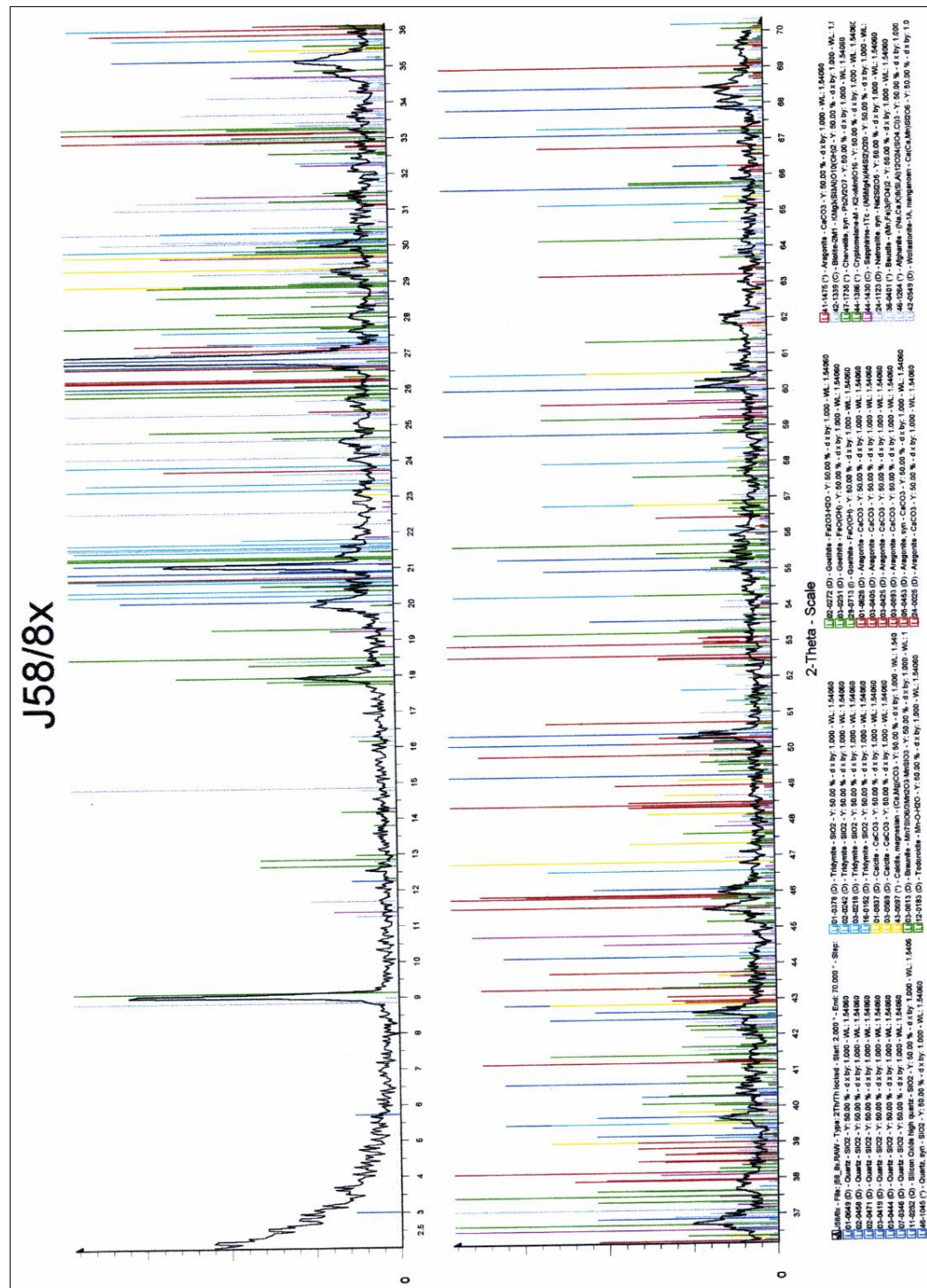


Figure D.5: XRD spectra - J58-7



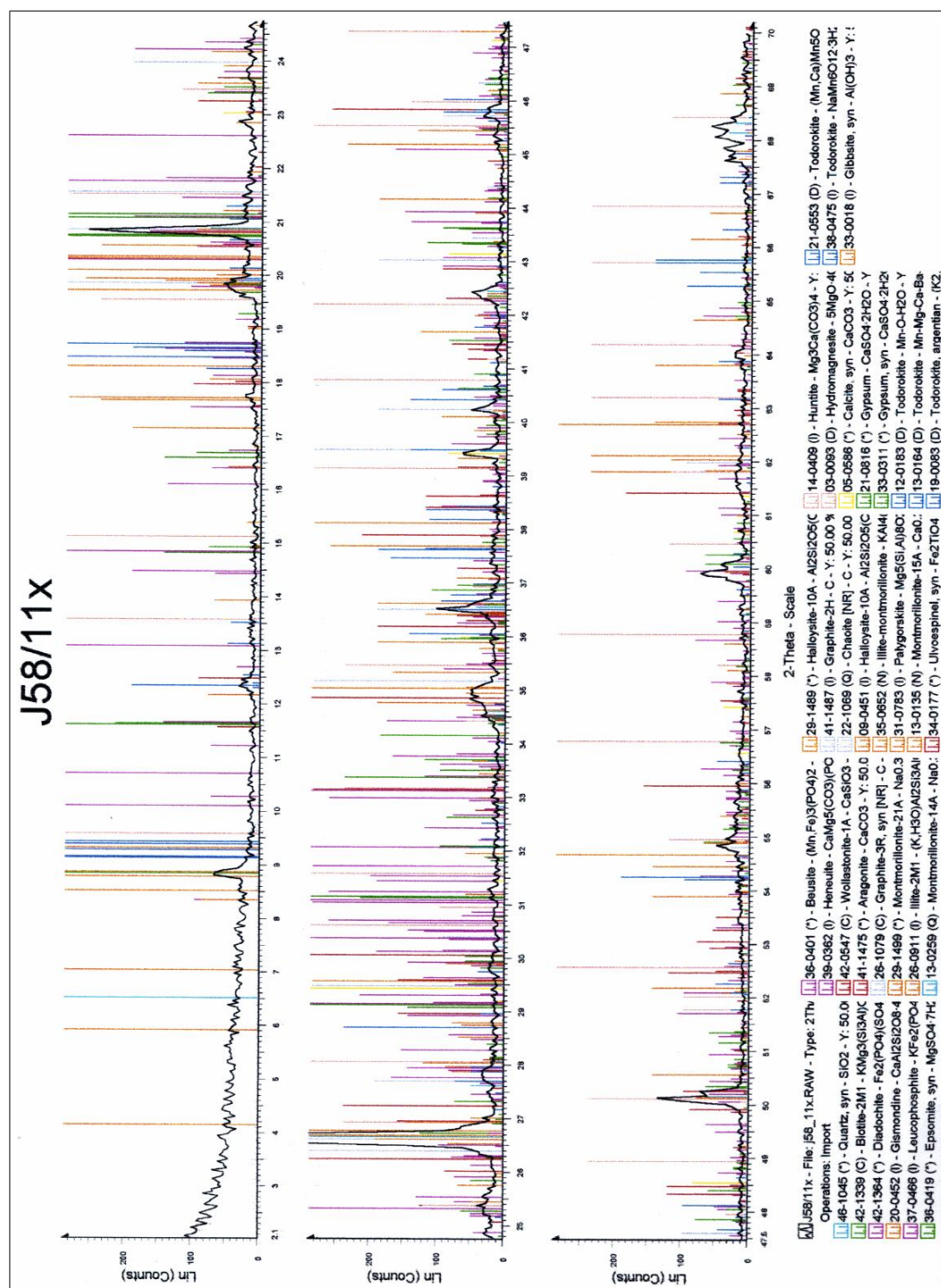


Figure D.7: XRD spectra - J58-11

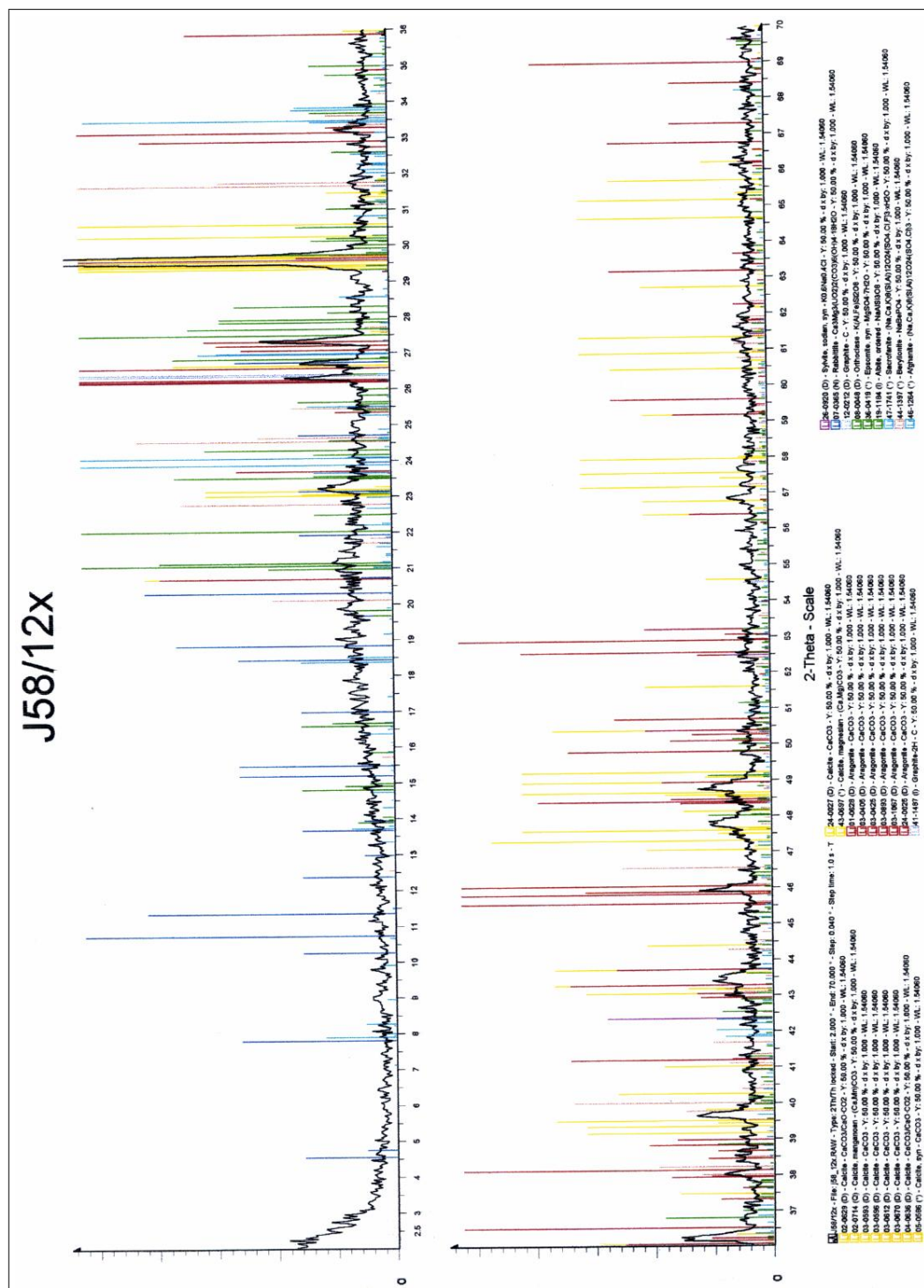


Figure D.8: XRD spectra - J58-12

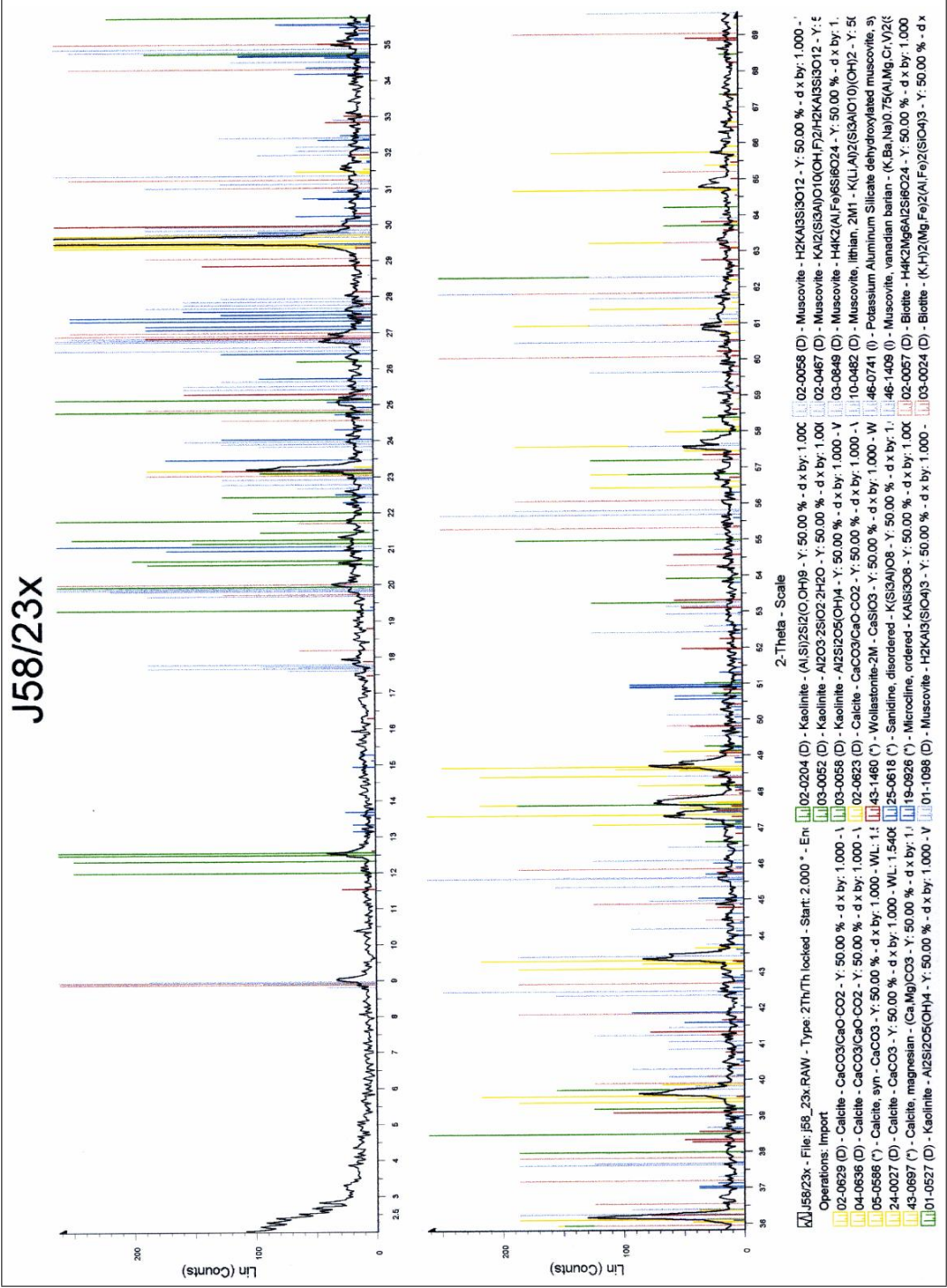


Figure D.9: XRD spectra - J58-23



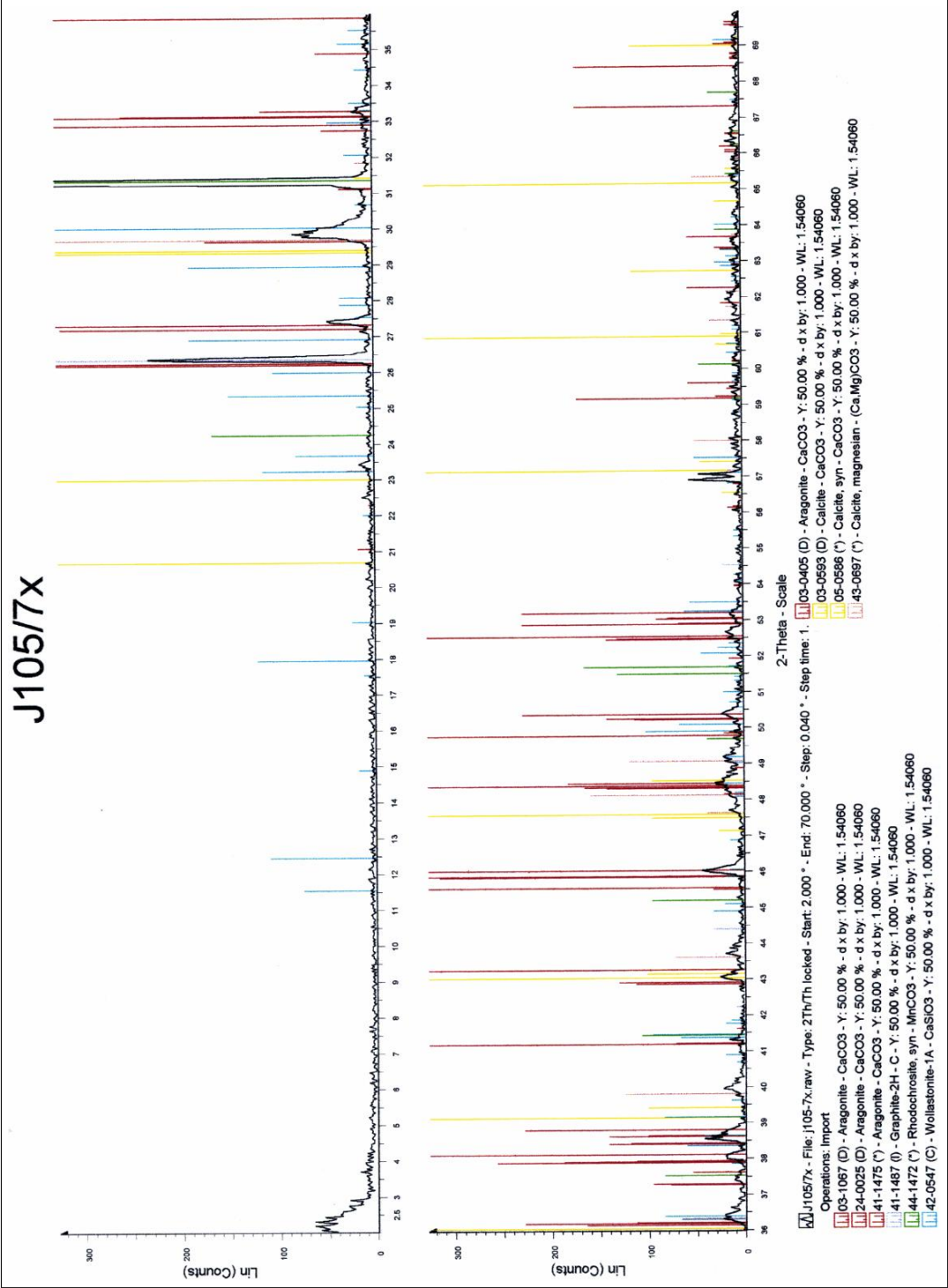
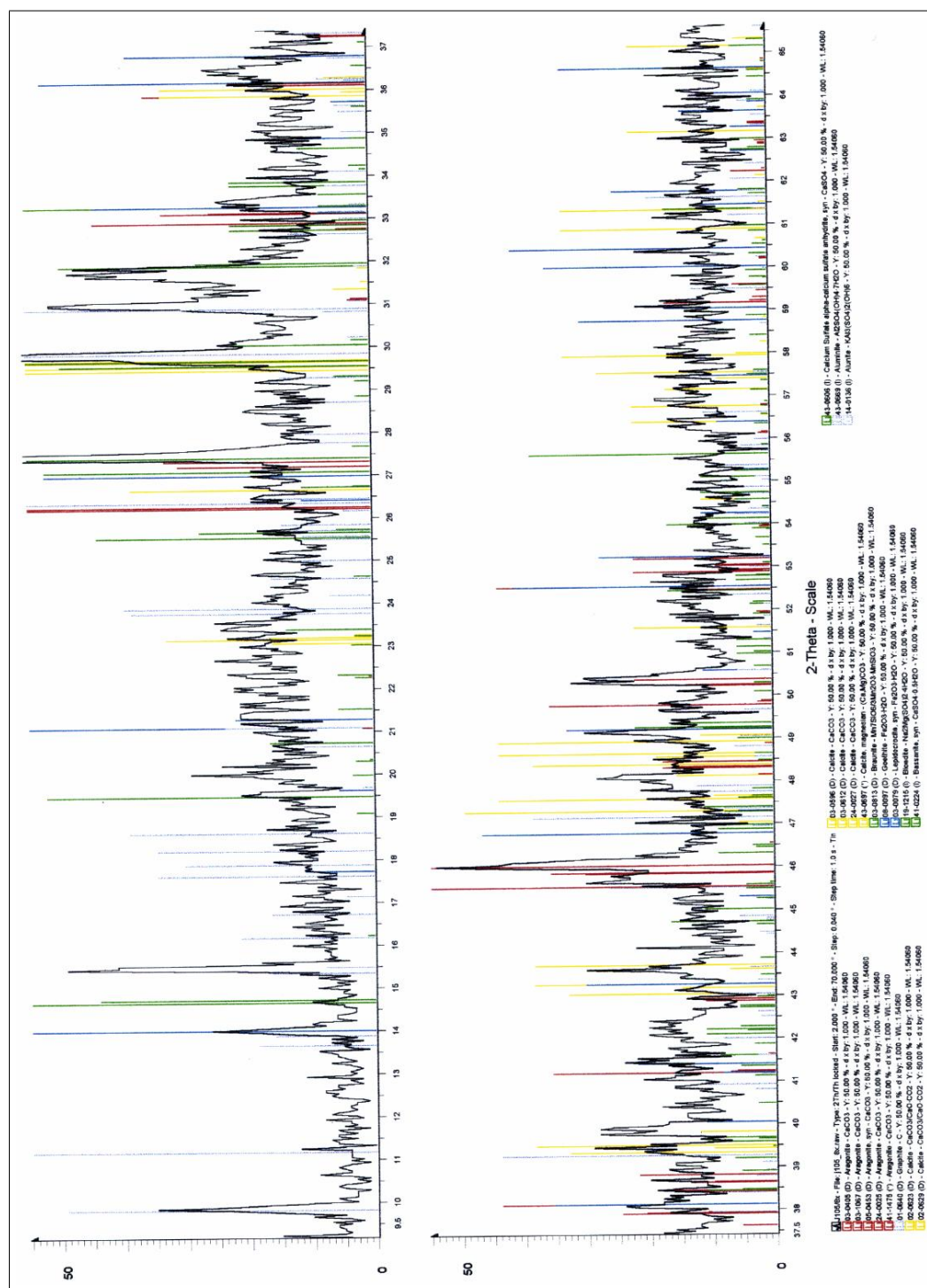
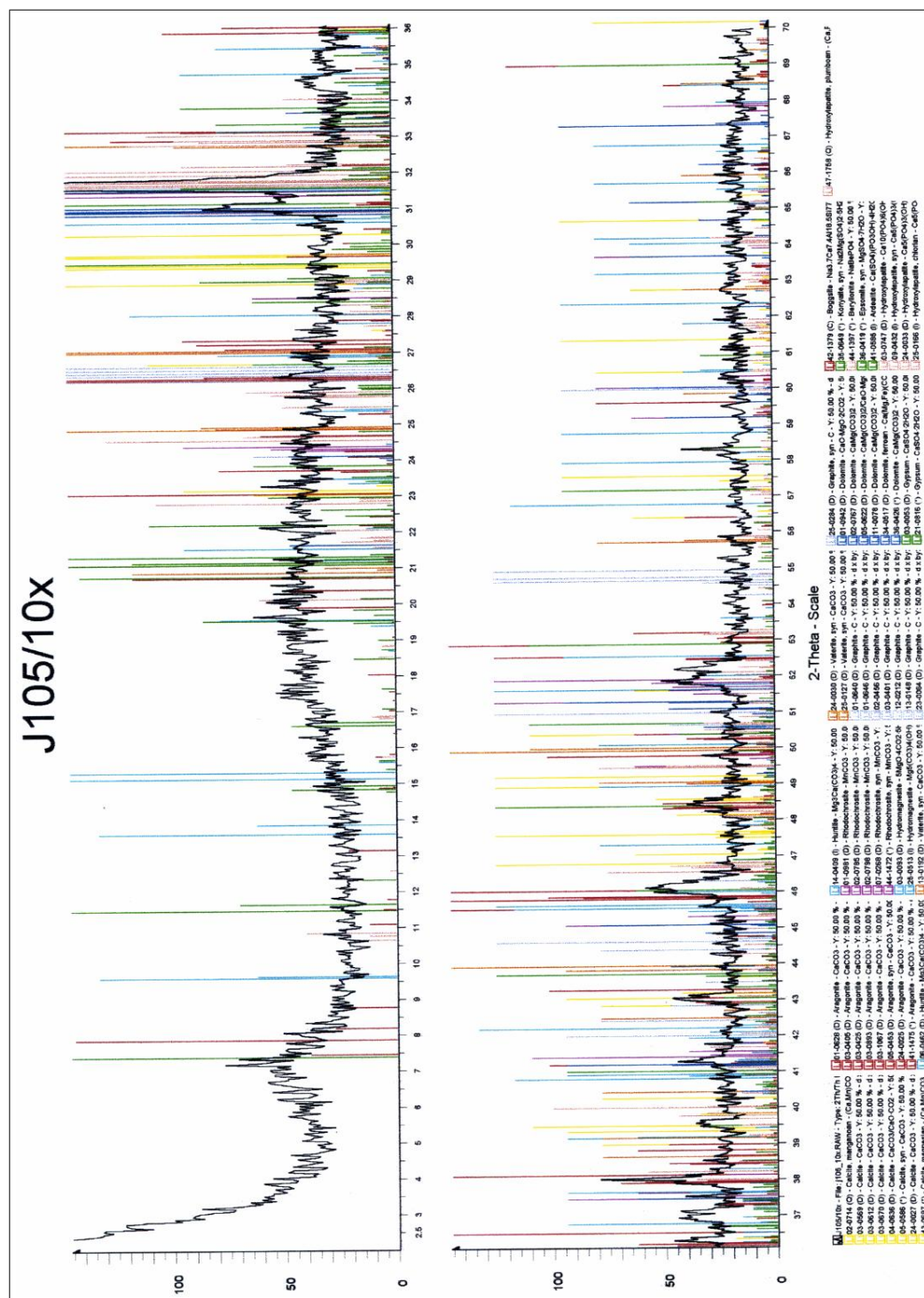


Figure D.11: XRD spectra - J105-7







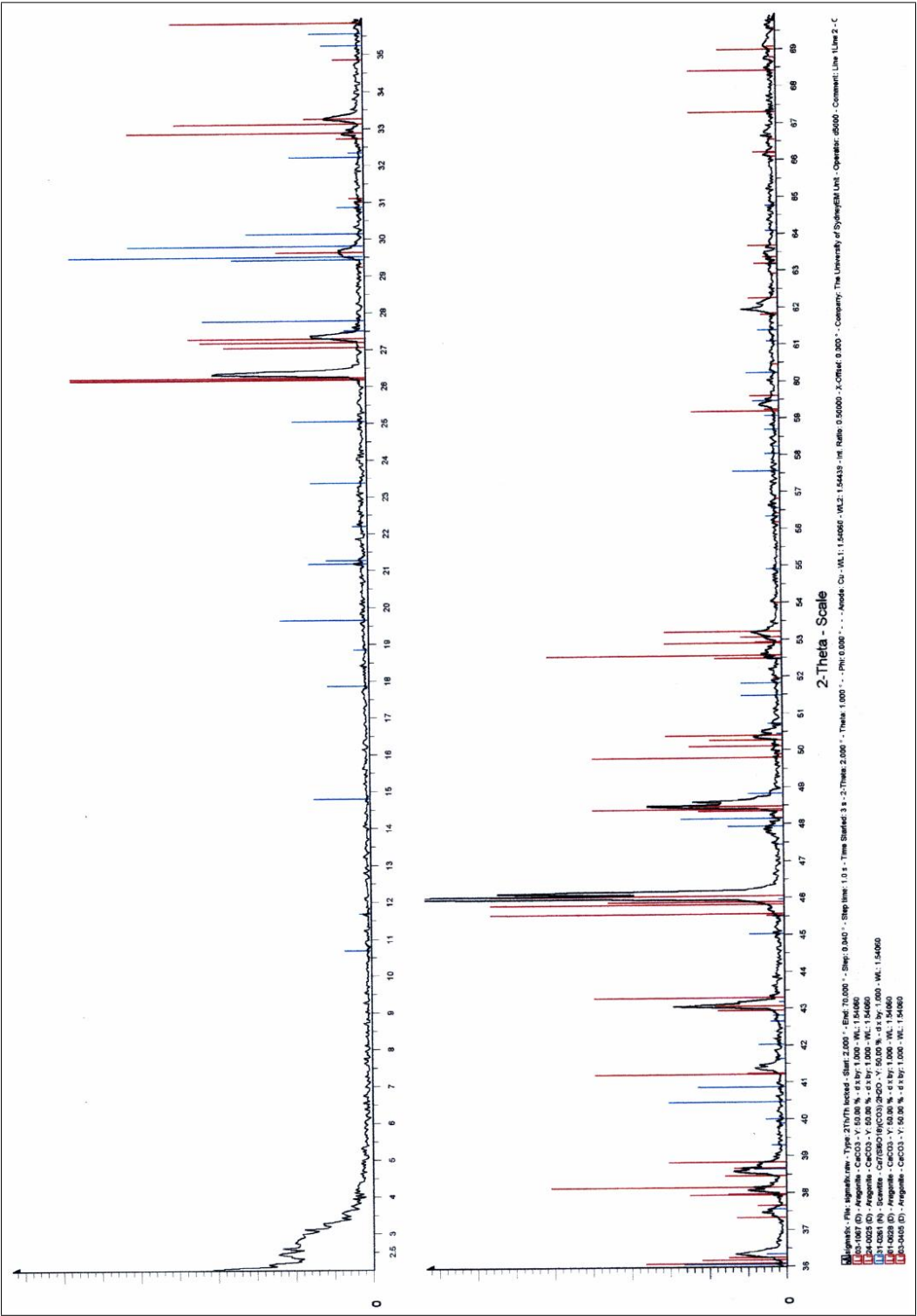
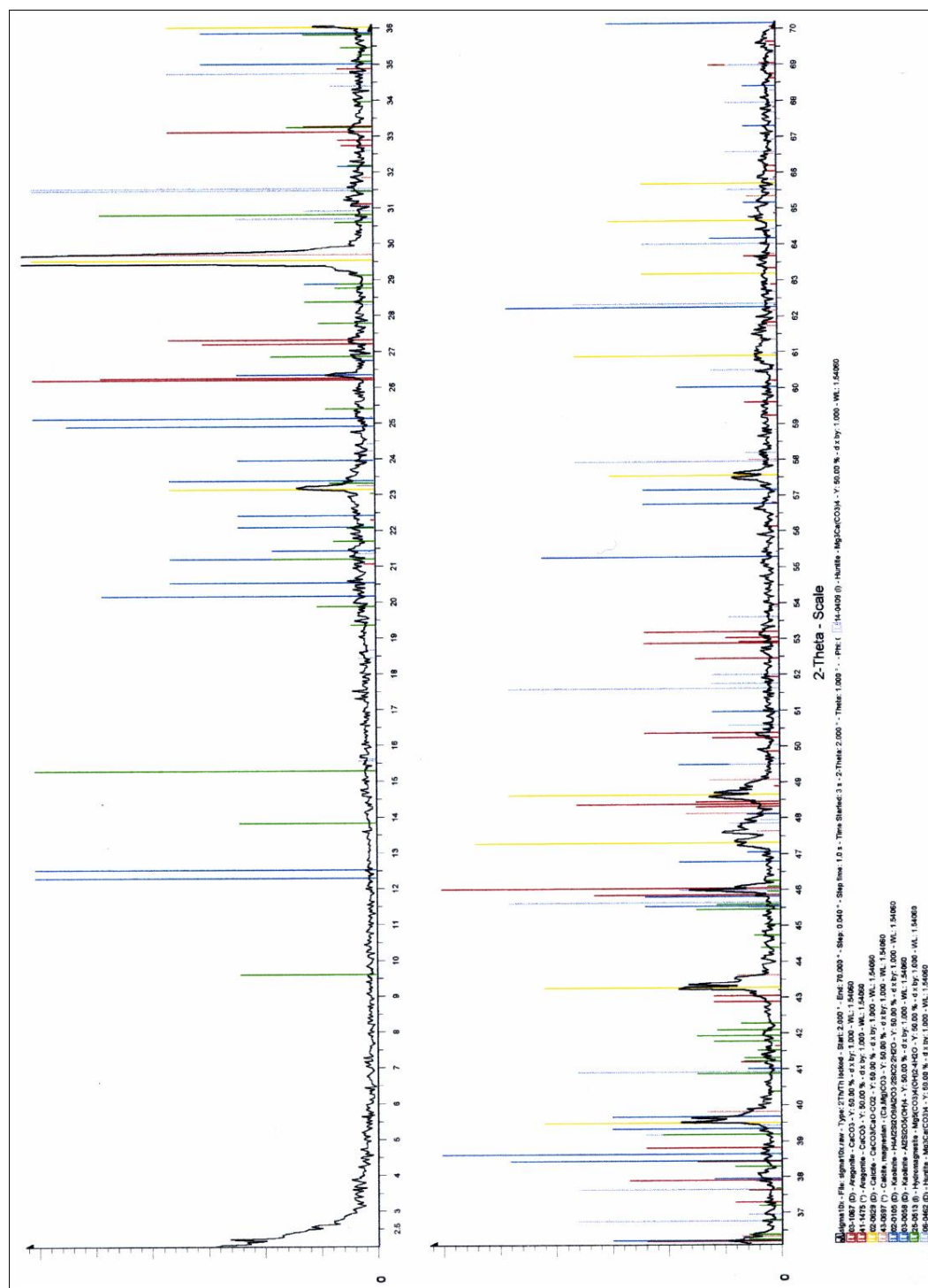


Figure D.15: XRD spectra - Sigma-9



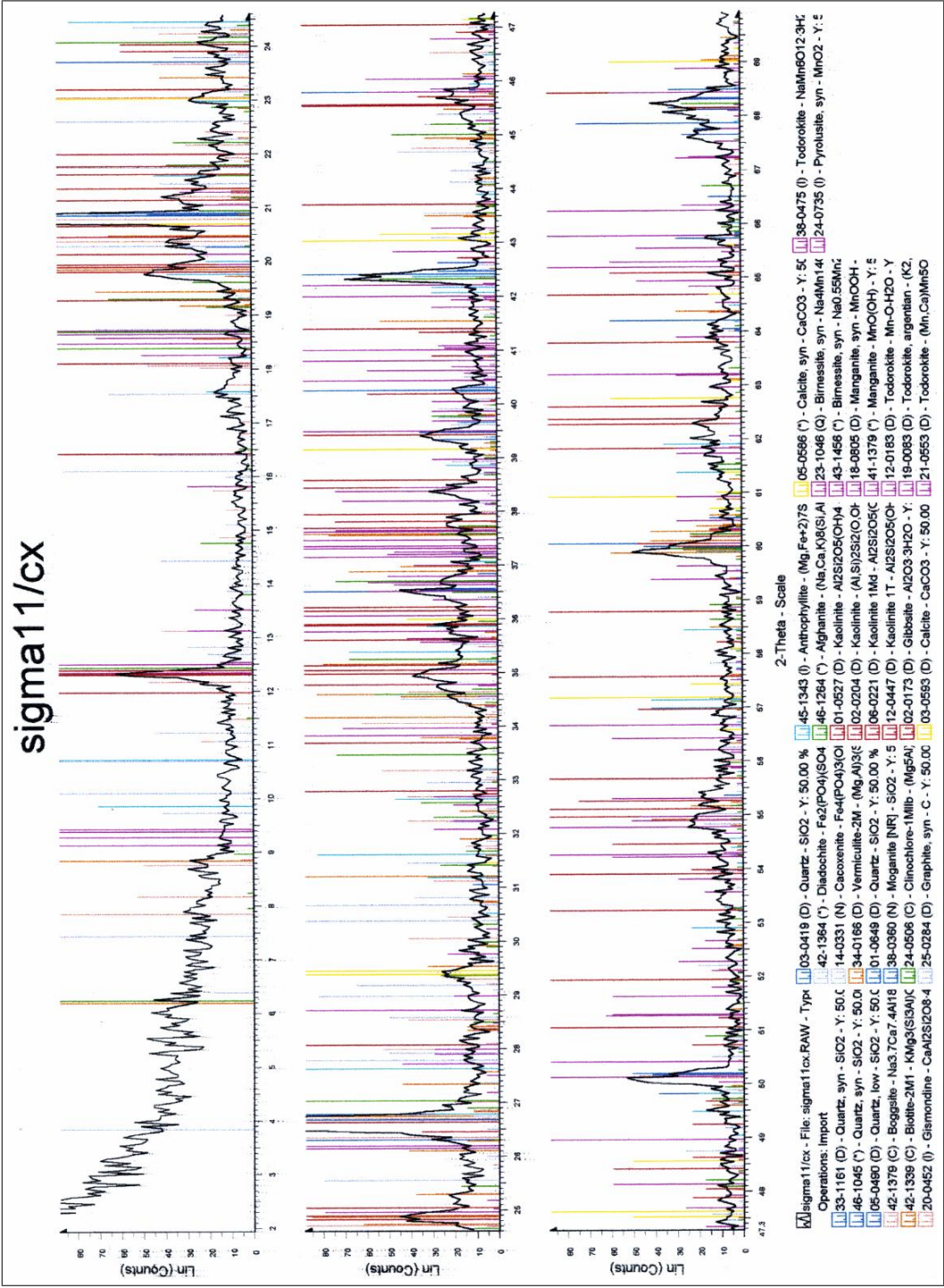


Figure D.17: XRD spectra - Sigma-11c

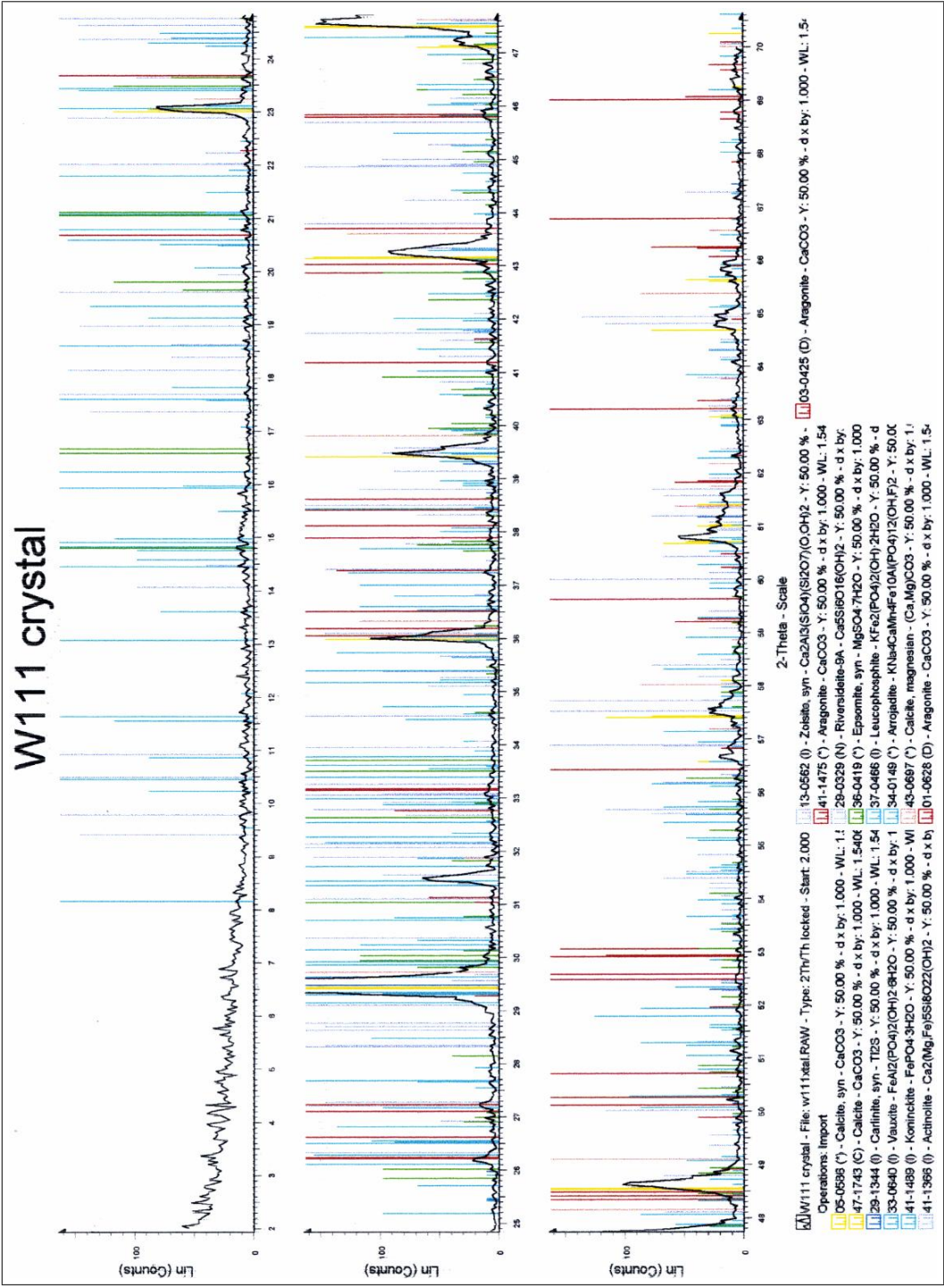


Figure D.18: XRD spectra - Sigma-W111xtal

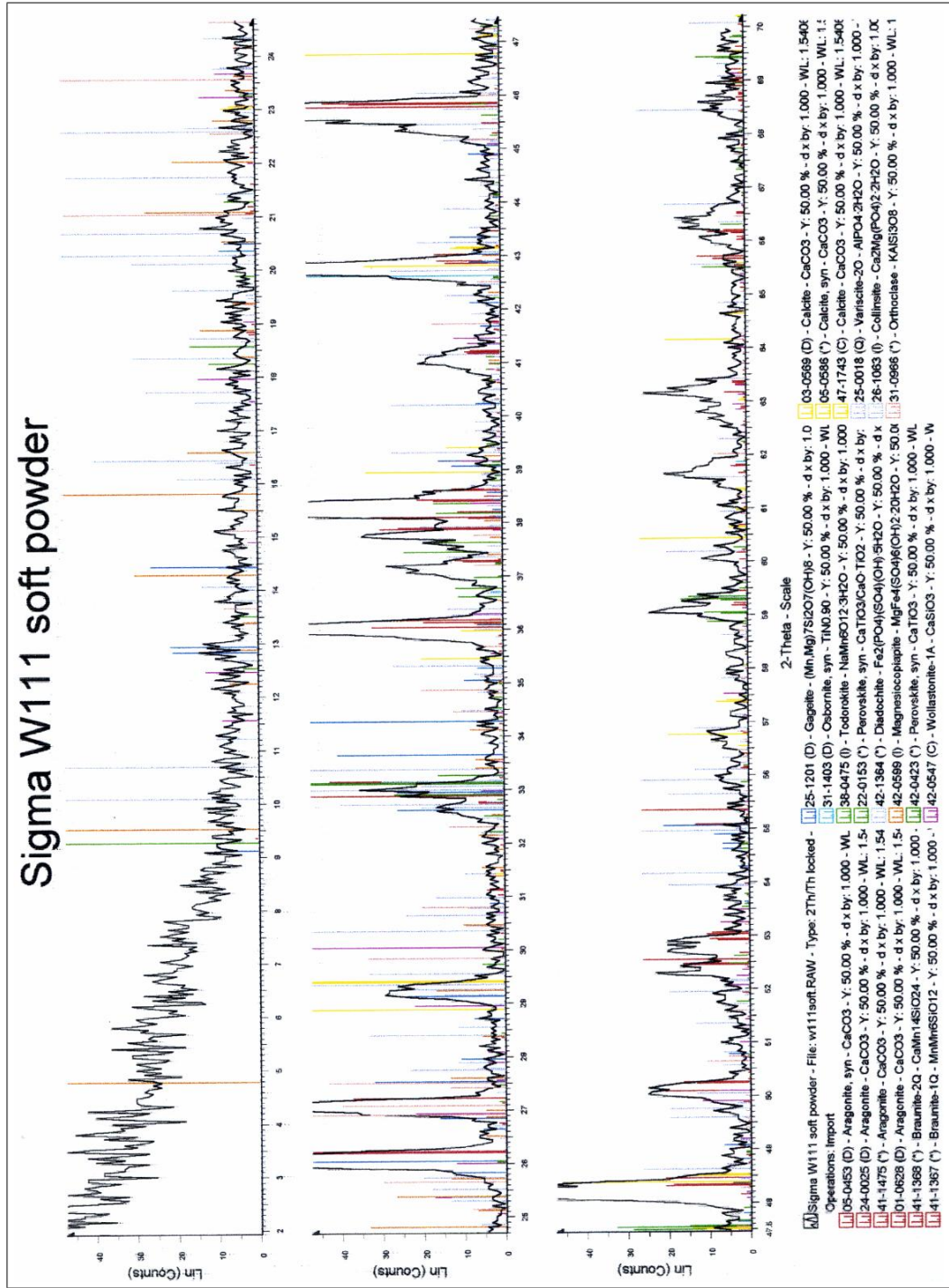


Figure D.19: XRD spectra - Sigma-W111soft

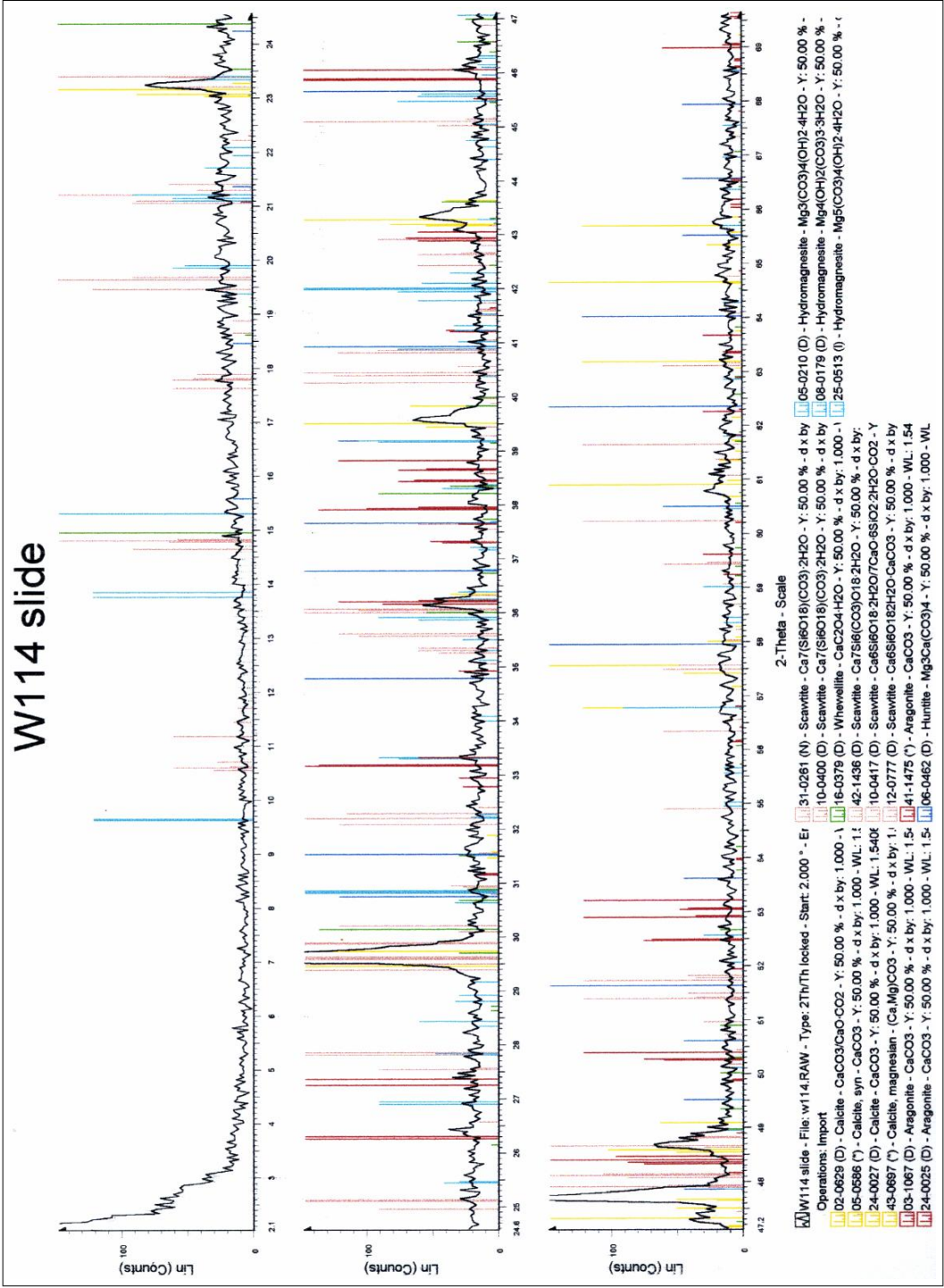


Figure D.20: XRD spectra - Sigma-W114

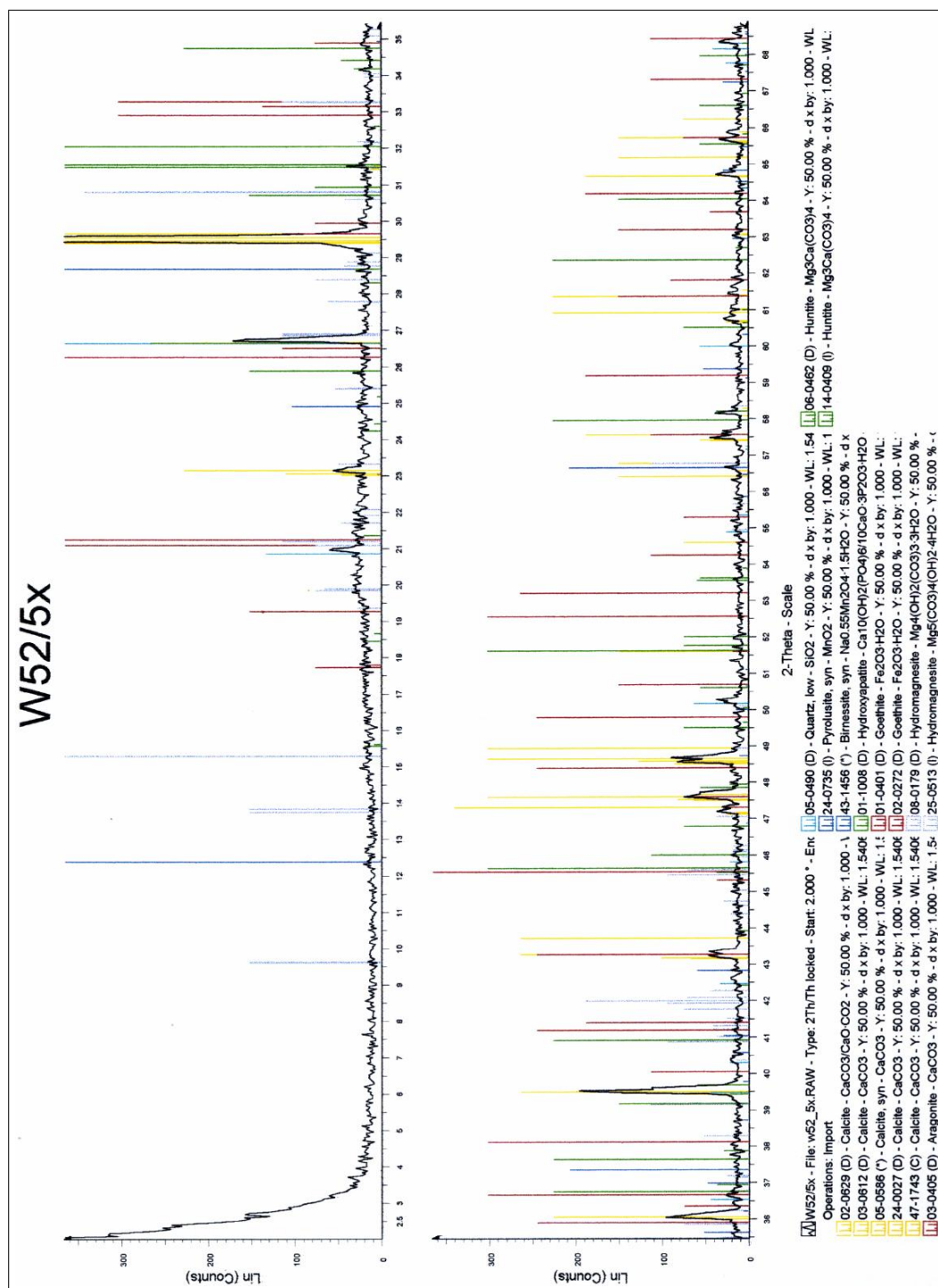




Figure D.22: XRD spectra - W52/6

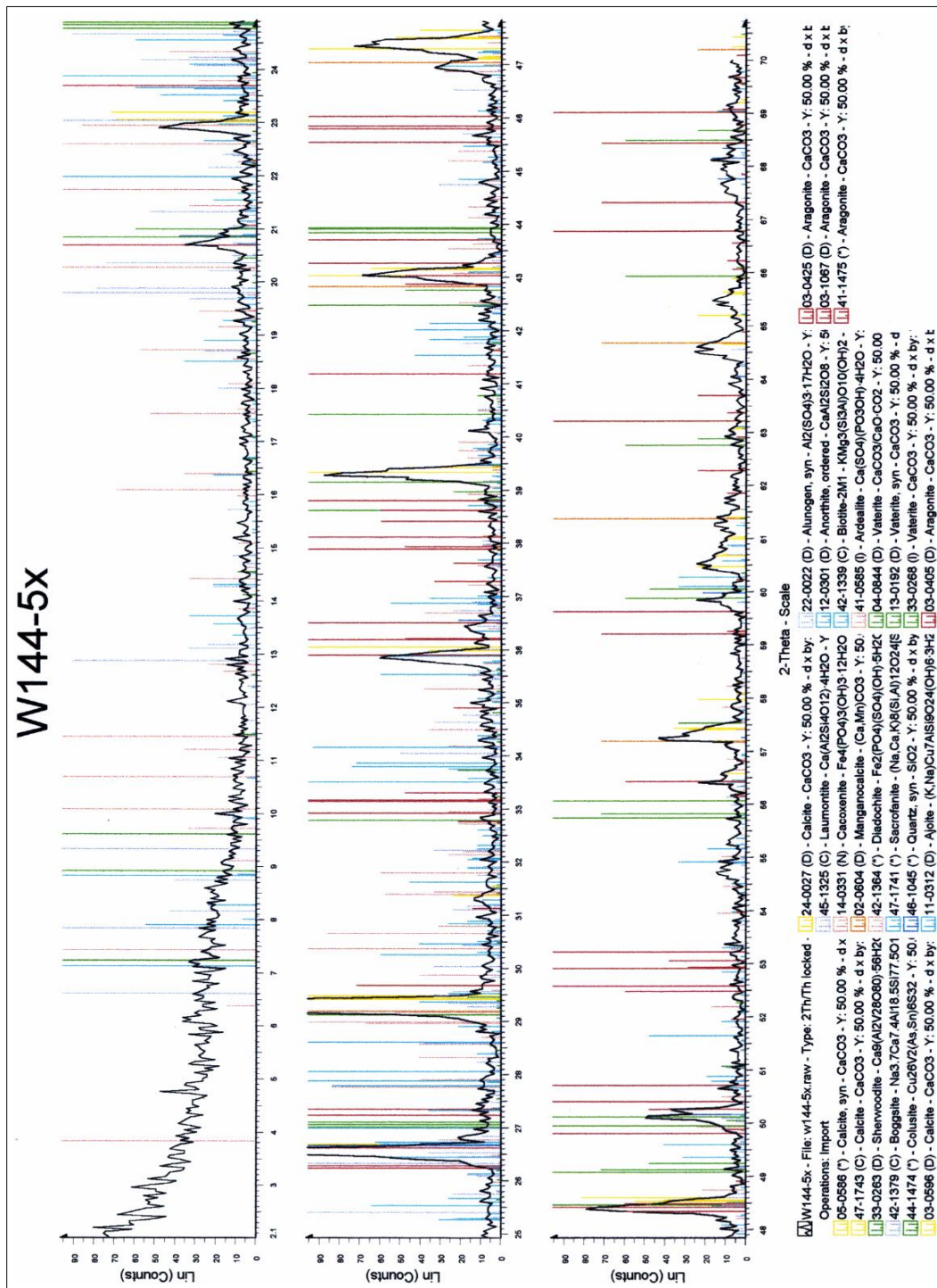


Figure D.23: XRD spectra - W144/5



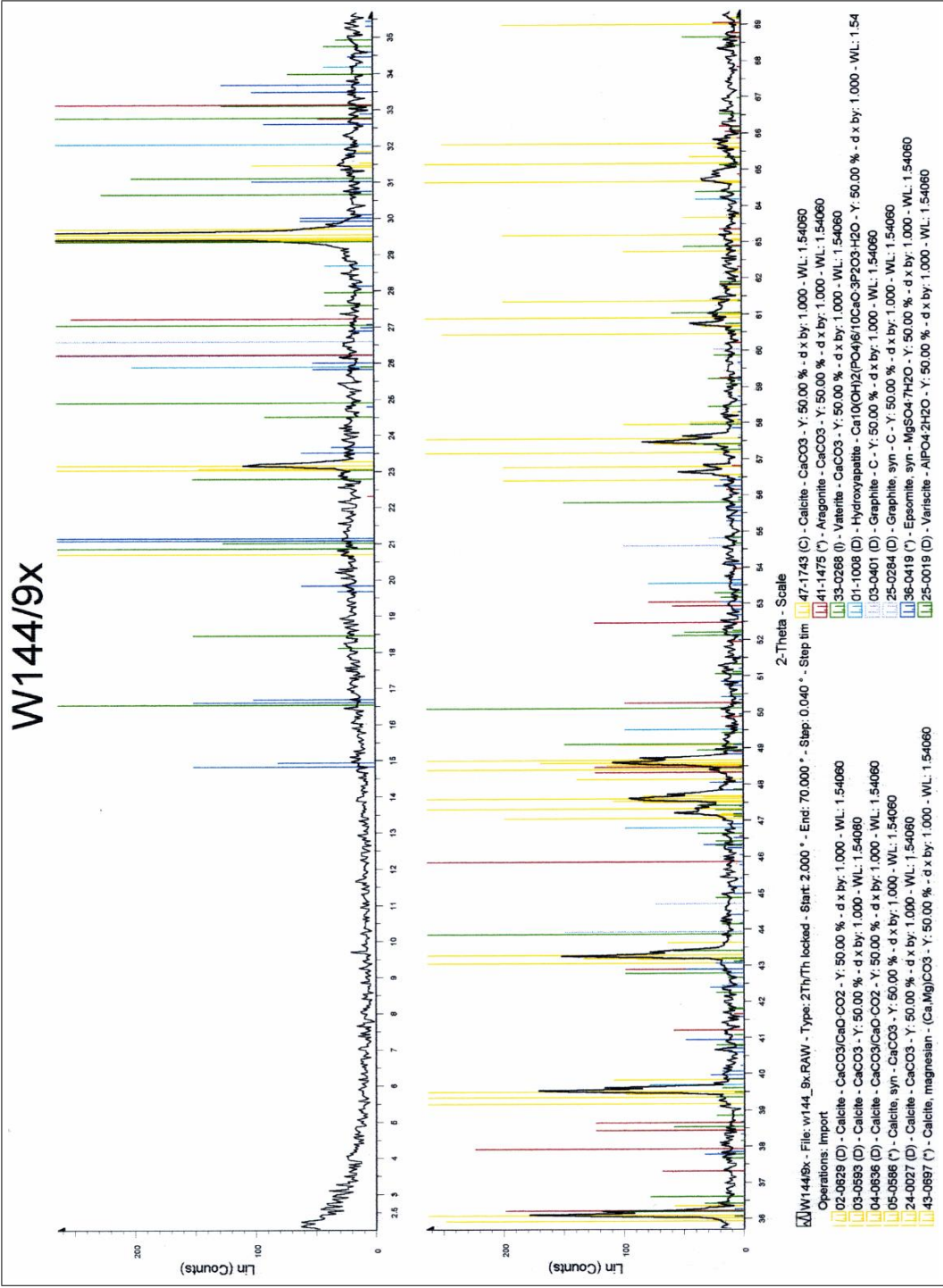


Figure D.25: XRD spectra - W144/9

Colophon

This thesis was typeset by the author using L^AT_EX 2 ϵ , on an Apple Macintosh 12" laptop running MacOS 10.2.6, and an Athlon PC running Debian GNU/Linux. The main font used was Times Roman at 11pt with Computer Modern Roman font used in some areas. The bibliography was prepared with BIB_TE_X using an AGSM citation style.

Most editing was done with either vim or gvim. The job control file was edited to select only a chapter, several chapters or the whole volume as needed. Typeset chapters were compiled into pdf format using either T_EXShop on the Mac or pdflatex on either computer. Files were exchanged between the computers with ftp on a home LAN. Completed chapters were transferred by ftp to a web site together with a manually updated html index file containing links to each pdf chapter for supervisors to check the work via the internet. In this case, low resolution images were used compared to the final work.

Most images were scanned from colour prints or 35 mm slides using an Epson Perfection 2400 photo scanner. These were trimmed and colour-corrected using "The Gimp" software, and converted to jpg. The colour images were 300 dpi and the monochrome ones were generally 600 dpi. Diagrams were created using Xfig, and saved as PDF. Electron micrographs were converted from tiff to jpg. XRD plots were colour photocopied and were manually added to the thesis.

Proofs were printed on a Lexmark T520 postscript printer. Colour pages were collated into a single pdf file on a CDROM for commercial colour printing.

Excluding images, the source files total about 840 kB. The total size of the pdf proofs using low-resolution images is 37 MB. The total size of the final pdf using higher resolution images is 30 to 50 MB, depending on the compression used.